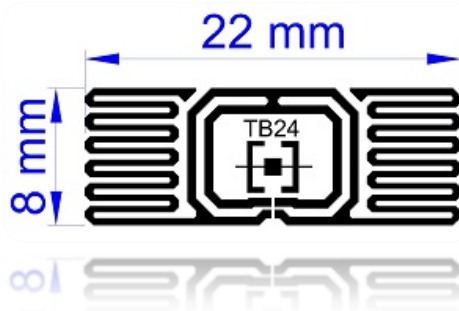


“TB24 RINGTRACE” Inlay

Produced by Trace-Tech Id Solutions S.L.
Tag for Near Field and Short Range Item level Tagging



Overview

The TB24 is optimized for short to medium range item level tracking, including pharmaceuticals, garments, and assets. Its design allows it to operate in the near field as well as short range far-field.

The TB24 features the Impinj Monza 4 chip, the Monza 4 family provides a variety of models to suit diverse applications, ushering in new standards in RFID privacy, tag orientation insensitivity, best and most consistent read/write performance, and memory capability.

Communication Protocol and Memory Specifications

Wireless Communication Protocol EPC Gen 2, ISO 18000-6C, ISO/IEC 15963 (UID standard).
Protocol Class 1. Component Used Impinj Monza 4

| IC NAME | Monza 4D | Monza 4E | Monza 4QT |
|-------------------------------------|-----------|-----------|-----------|
| EPC MEMORY | 128 bits | 496 bits | 128 bits |
| USER MEMORY | 32 bits | 128 bits | 512 bits |
| SERIALIZED TID | 32 bits | 32 bits | 32 bits |
| RESERVED MEMORY (password, kill) | 64 bits | 64 bits | 64 bits |
| READ SENSIBILITY LIMIT | -18 dBm | -18 dBm | -18 dBm |
| WRITE SENSIBILITY LIMIT | -14,6 dBm | -14,6 dBm | -14,6 dBm |

Features

- Optimized for item tracking in near-field and short range operation
- Enhanced anti-counterfeiting/anti-cloning capability.
- Applications include pharmaceuticals, jewellery management, and other assets.
- Aluminium inlay provides excellent performance at lower • costs than silver ink or copper; RoHS compliant

Functional Specifications

EPC Class 1 Gen 2
ISO/IEC 18000-6C
Operating Frequency Band:860 - 960 MHz
Read Range Typical ≥ 40cm with fixed reader and inlay mounted on cardboard
Mode of Operation Passive, Backscattering Modulation

Environmental Specifications

Operating Temperature Range -40° C to +65° C at 40-80% RH
Storage Temperature -40° C to +85° C at 40-80% RH
Electrostatic Discharge (ESD) tolerance: 2.000V HBM (Human Body Model)



Trace-Tech ID Solutions S.L.

www.tracetech-id.com

+34 935 451 176

info@tracetech-id.com

World Trade Center, South Building 2nd floor – Barcelona’s Harbour -08223 Barcelona (SPAIN)

©2012 Trace-Tech Id Solutions. All rights reserved. All Trademarks are properties of their respective owners. Prices, terms and specifications are subject to change without notice

“TB24 RINGTRACE” Inlay

Produced by Trace-Tech Id Solutions S.L.
Tag for Near Field and Short Range Item level Tagging

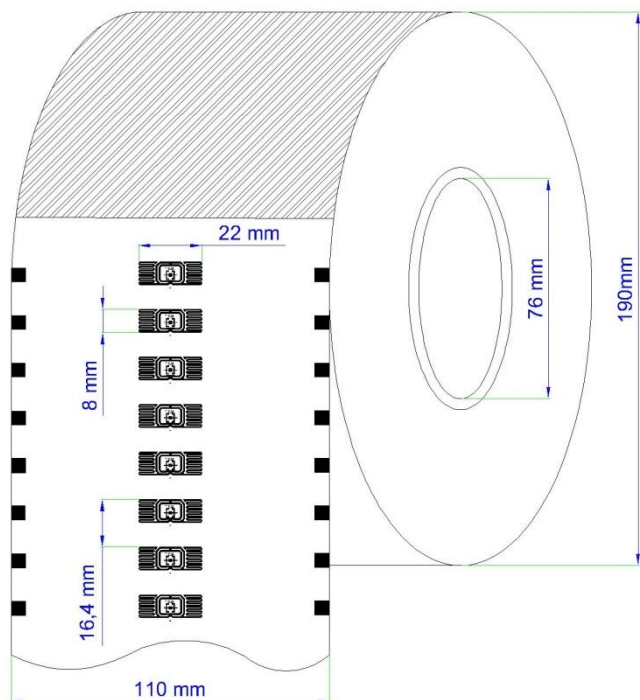
Dry Inlay Specifications

| | |
|---------------------------------|-------------------------------|
| Substrate | 50 micron PET |
| Metal Layer | Aluminum 99.8% pure |
| Pitch | 16.4224 mm |
| Overall Inlay Thickness with IC | Max 210 µm |
| Bending Diameter | ≥ 15mm, tension less than 6 N |

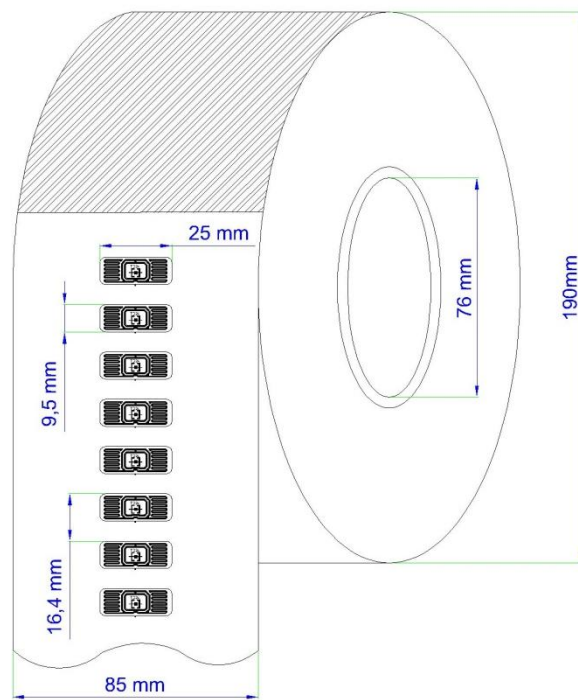
Wet Inlay Specifications

| | |
|----------------|------------|
| Die-cut size | 25x9.5 mm |
| Inlay Adhesive | Acrylic |
| Release liner | 40#SCK |
| Pitch | 16.4224 mm |

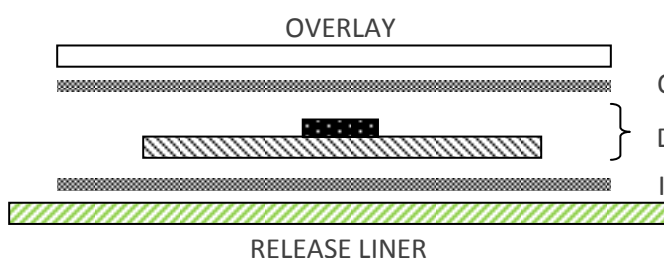
Dry Reel Layout



Wet Reel Layout



Wet Inlay or Labeltag Construction



Overlay Adhesive

DRY INLAY = 50 µm PET + Monza4 die

Inlay Adhesive

Customized solutions

Whatever size, material, shape and adhesive for:

- RFID Labeltags
- RFID Tickets
- RFID Hangtags
- RFID PVC cards
- Printing & codifying service
- High volumes and low volumes

